

cecotec

POWER ESPRESSO 20 TRADIZIONALE
POWER ESPRESSO 20 TRADIZIONALE LIGHT GREEN
POWER ESPRESSO 20 TRADIZIONALE LIGHT BEIGE
POWER ESPRESSO 20 TRADIZIONALE LIGHT BLUE
POWER ESPRESSO 20 TRADIZIONALE LIGHT YELLOW
POWER ESPRESSO 20 TRADIZIONALE LIGHT RED

Cafetera espresso / Espresso coffee machine



Manual de instrucciones
Instruction manual
Manuel d'instructions
Bedienungsanleitung
Manuale di istruzioni
Manual de instruções
Instructiehandleiding
Instrukcja obsługi
Návod k použití

1. PARTS AND COMPONENTS

Fig 1

1. Water tank cover
2. Water tank
3. Steam knob
4. Pressure gauge
5. Power switch
6. Steamer
7. Cup/mug tray
8. Drip tray
9. Single-coffee filter
10. Portafilter
11. Portafilter handle
12. Measuring spoon with tamper
13. Double-coffee filter

Control panel

14. Power switch
15. Coffee switch
16. Steam switch
17. Power LED indicator: it lights red when the device is switched on
18. Steam LED indicator: it lights up blue when the steam function is enabled

NOTE:

The graphics in this manual are schematic representations and may not exactly match the product.

2. BEFORE USE

- This appliance is packaged in a way as to protect it during transport. Take the appliance out of its box and remove all packaging materials. You can keep the original box and other packaging elements in a safe place. This will help you prevent product damage when transporting it in the future. In case the original packaging is disposed of, make sure all packaging materials are recycled accordingly.
- Make sure all parts and components are included and in good conditions. If there is any piece missing or in bad conditions, contact the official Cecotec Technical Support Service immediately.

Box content

- Power Espresso 20 Tradizionale / Light Green / Light Beige / Light Blue / Light Yellow / Light Red coffee machine
- Single-coffee filter
- Double-coffee filter
- Portafilter
- Instruction manual

- Clean all parts of the product that come into contact with the coffee while brewing: portafilter, filters, measuring spoon and tamper, cup/mug tray, drip tray, water tank and cover.

Warning

Keep all packaging material, including plastic or cardboard, out of reach of children to avoid risk of suffocation.

Interior cleaning**Warning**

The machine may make noises when dispensing water and during the cleaning process. This is normal and does not indicate a malfunction of the product.

Clean the internal ducts of the device before using it for the first time. To do so, carry out the following steps:

1. Place the appliance on a stable and level surface. Make sure that the power socket is in an accessible location.
2. Install the drip tray and place the cup/mug tray on it.
3. Remove the water tank, fill it with water and reinstall it. The refilled water level must be between the MIN and MAX marks.
4. Make sure that both the steam switch and the steam knob are in the off position. If you switch on the device with the steam knob activated, the two indicator lights will flash rapidly.
5. Install the portafilter (check the 'Portafilter installation' section) with the filter inside. Do not put coffee in the filter. Make sure it is securely fixed in position.
6. Place a glass or cup under the coffee spouts.
7. Connect the device cord to the power socket.
8. Slide the power switch to the ON position to turn on the device. The power indicator light will slowly start flashing red and the coffee machine will start to heat up. Once the coffee machine has heated up enough, the red light will stop flashing and remain steady.
9. Slide the coffee switch downwards to activate it, the device will dispense hot water from the coffee spout. Slide it upwards to stop dispensing water.

10. Empty the glass or cup and place it under the steamer. With the coffee and steam switches off, turn the steam knob anticlockwise: the device will dispense hot water through the steamer. Turn the steam knob clockwise to the off position to stop dispensing water.
11. Once you have stopped dispensing water, remove the water tank, rinse it and clean the cup or glass you have used. The coffee machine is now ready for use.

Please note

For a more thorough cleaning process of the inside of the device, use a 1:4 solution of vinegar and water or use a descaling product.

3. OPERATION

Filling up the coffee filter

- Insert the desired filter in the portafilter.
- Fill the filter with natural ground coffee.
- Make sure the amount of coffee added does not exceed the edge of the filter.
- Use the measuring spoon to press the coffee, add more coffee if necessary and press it again.
- Clean any coffee that exceeds the edge of the filter in order to install the portafilter correctly on the unit and to ensure proper operation. Fig 2

Warning

It is very important to press the coffee well in order to obtain good results.

Inserting the portafilter

- Place the portafilter in position, its handle must match the UNLOCK mark. Turn the portafilter counterclockwise to lock it until its handle matches the LOCK mark. Fig 3
- To remove the portafilter from the brewer, follow these steps in reverse order.

Warning

The device will automatically enter standby mode after 15 minutes of no operation. If the device goes into standby mode, it is recommended to turn the power switch to the off position.

Coffee brewing

Warning

It is recommended to use bottled water for better maintenance of the coffee machine.

1. Follow the instructions in the "Filling up the coffee filter" section to fill the filter (for 1 or 2 coffees).

2. Follow the instructions in the installation section of the portafilter to install it.
3. Slide the coffee switch downwards, the coffee will start dispensing. Once you have obtained enough coffee, turn the switch to the off position.

Preparation of types of lattes

Once you have prepared the coffee, prepare the milk:

1. Slide the steam switch down, the blue indicator light will start flashing slowly.
2. Once it has warmed up, the blue light will stop flashing and remain steady.
3. Fill a cup or container with milk. It is recommended to use whole milk at room temperature for best results.

Warning

- Do not use the steam function with warm or hot milk.
 - It is recommended to use a bowl or milk container with a minimum diameter of 70 ± 5 mm. Remember that the milk will double in volume. For this reason, make sure that the container used for the milk is high enough.
4. Insert the steamer into the milk container to a depth of 1-2 cm. When frothing the milk, move the container up and down. Slowly turn the steam knob counterclockwise the device to generate steam. Fig 4

Warning

Turn the steam knob slowly. By turning it sharply, the accumulated steam may escape under pressure and cause the milk to splash out, causing burns.

Please note

The steamer may emit a small amount of water before emitting steam.

5. Once you have the desired milk froth, turn the steam knob clockwise to the 0 position.

Warning

Wait at least 2 minutes after using the steam function before using it again.

6. Pour the milk or frothed milk into the glass with the previously prepared coffee, add sugar to taste and sprinkle with cocoa powder if you wish to have a cappuccino. You can also sprinkle cinnamon or cardamom powder.

Warning

Disassemble and clean the steamer after each use. It is advisable to do a second steam or hot water run over an empty glass to clean the internal passages of the steamer.

Hot water

1. Place a glass or cup under the steamer.
 2. With the coffee and steam switches in the OFF position, turn the steam knob counterclockwise: the machine will start dispensing hot water.
 3. Once you have obtained the desired amount of water, turn the steam knob clockwise to position 0.
- Let the machine heat up and repeat these steps to dispense hot water as many times as necessary.

Device cooling process

- After steaming or brewing coffee, the temperature of the device is likely to increase significantly, so all components will be very hot. The power indicator will start flashing rapidly indicating that the temperature of the device is too high and needs to be lowered.
- Turn the steam knob anticlockwise and turn the coffee switch to the on position. The device will dispense water through the steamer.
- When the red indicator light stops flashing, turn the coffee switch to the off position and turn the steam knob to the off position as well. The temperature will start to decrease.
- When the power indicator is steady, the machine is ready to be used again.

4. CLEANING AND MAINTENANCE

Warning

Proper and regular cleaning ensures a safe use of the device and extends its shelf life.

- Switch off and disconnect the device from the mains and allow it to cool down completely before cleaning.
- Do not use abrasive cleaners or scouring pads as they could cause damage to the product's surface.
- Use a soft, damp cloth to clean the outside of the coffee machine regularly.
- Do not use metallic, sharp or rough cleaning accessories; these could damage the product.
- Do not immerse the main body in water or other liquids.
- Clean the water tank, drip tray, measuring spoon, portafilter, filter and cup tray with water and a neutral detergent.
- After using the steam function, the tube must be cleaned with a cloth immediately after. Allow steam to be released to avoid possible blockages inside the tube.
- Periodically, carry out a more thorough cleaning of the steamer. To do this, first remove the metal tube, then insert a needle or other fine element through the steam outlet to remove any residue and avoid blockages.
- Dry all components thoroughly before storing or using the device again.
- Always store the device in a dry, well-ventilated place out of the reach of children.

- Protect the device from vibrations and shocks when transporting.

Cleaning the coffee machine portafilter after each use

- Remove the portafilter from the device.
- Lift the filter holder so that it holds the filter securely.
- Carefully tap the filter against the dustbin to empty the coffee residues.
- Lower the filter holder again.
- Remove the filter from the portafilter. It may be hot, be careful not to burn yourself.
- Clean the coffee machine portafilter and filter with water and a cloth. They are not dishwasher safe.

Water tank cleaning

1. Remove the water tank from the machine.
2. Clean the tank and lid under water with a mild detergent. Then rinse well with water.
3. Allow to dry completely.

Descaling

- Perform regular descaling. To do this, dissolve the descaling agent according to the manufacturer instructions in the water tank. Fill the tank with water.
- Pass the descaling agent through the coffee and steam tubes until the tank is empty.
- Clean the water tank and refill it with clean water.
- Pass two tanks of clean water through the coffee and steam tubes.

5. TROUBLESHOOTING

Problem	Possible causes	Possible solutions
Too little coffee comes out or there's almost no pressure.	Mineral deposits in the device.	Carry out a full descaling of the device.
The water tank leaks.	Dust tank is not installed correctly. You have exceeded the MAX level.	Install the tank correctly in position. Drain the water from the tank.
The bottom of the machine leaks.	There is too much water in the drip tray.	Empty the drip tray.

ENGLISH

The coffee machine does not brew coffee.	<p>There is not enough water in the tank.</p> <p>The coffee is too finely ground or too fine.</p> <p>Not enough coffee in filter.</p> <p>The device is not connected to the power socket or is not switched on.</p> <p>The coffee in the filter has been over-pressed.</p> <p>The plastic rubber has not been removed from the water tank outlet.</p>	<p>Add water.</p> <p>Add coarser ground coffee.</p> <p>Add coffee to the filter.</p> <p>Connect the device to the power socket or turn it on.</p> <p>Press the coffee from the filter with less pressure.</p> <p>Remove the rubber from the water tank.</p>
The coffee machine portafilter holder leaks water or coffee.	<p>The coffee machine portafilter is not properly installed.</p> <p>There is too much coffee in the filter.</p> <p>Coffee has accumulated on the holder of the coffee machine portafilter.</p>	<p>Install the portafilter correctly.</p> <p>Remove some coffee from the filter on the coffee machine portafilter.</p> <p>Clean the portafilter holder.</p>
No water/steam comes out. Milk is not properly frothed.	<p>There is not enough milk or the milk is skimmed.</p> <p>The milk is not cold enough.</p> <p>The steam indicator is not lit.</p> <p>The steamer is clogged.</p>	<p>Add milk or use whole milk.</p> <p>Allow the milk to cool.</p> <p>Turn the steam switch to the on position.</p> <p>Clean the steamer.</p> <p>Carry out a full descaling of the device.</p>
The machine does not turn on.	<p>The device is not properly connected to the power socket.</p>	<p>If the device is properly connected and still does not work, please contact the official Cecotec Technical Support Service.</p>
Coffee is dispensed too quickly.	<p>The coffee has not been ground sufficiently and is too coarse.</p> <p>Not enough coffee in filter.</p> <p>The coffee has not been sufficiently pressed.</p>	<p>Use better or more ground coffee.</p> <p>Add coffee to the filter.</p> <p>Press the filter coffee harder.</p>

6. TECHNICAL SPECIFICATIONS

Product reference: 01575 / 01576 / 01585 / 01628 / 01629 / 01727

Product name: Power Espresso 20 Tradizionale / Light Green / Light Beige / Light Blue / Light Yellow / Light Red

Voltage and frequency: 220-240 V ~, 50/60 Hz

Power: 1350 W

Technical specifications may change without prior notification to improve product quality.

Made in China | Designed in Spain

7. DISPOSAL OF OLD ELECTRICAL AND ELECTRONIC APPLIANCES



This symbol indicates that, according to the applicable regulations, the product and/or batteries must be disposed of separately from household waste. When this product reaches the end of its shelf life, you should dispose of the batteries/accumulators and take them to a collection point designated by the local authorities.

Consumers must contact their local authorities or retailer for information concerning the correct disposal of old appliances and/or their batteries.

Compliance with the above guidelines will help protecting the environment.

8. TECHNICAL SUPPORT AND WARRANTY

Cecotec shall be liable to the end user or consumer for any lack of conformity that exists at the time of delivery of the product under the terms, conditions, and deadlines established by the applicable regulations.

It is recommended that repairs be carried out by qualified personnel.

If at any moment you detect any problem with your product or have any doubt, do not hesitate to contact the official Cecotec Technical Support Service at +34 963 210 728.

9. COPYRIGHT

The intellectual property rights over the texts in this manual belong to CECOTEC INNOVACIONES, S.L. All rights reserved. The contents of this publication may not, in whole or in part, be reproduced, stored in a retrieval system, transmitted, or distributed by any means (electronic, mechanical, photocopying, recording, or similar) without the prior authorization of CECOTEC INNOVACIONES, S.L.

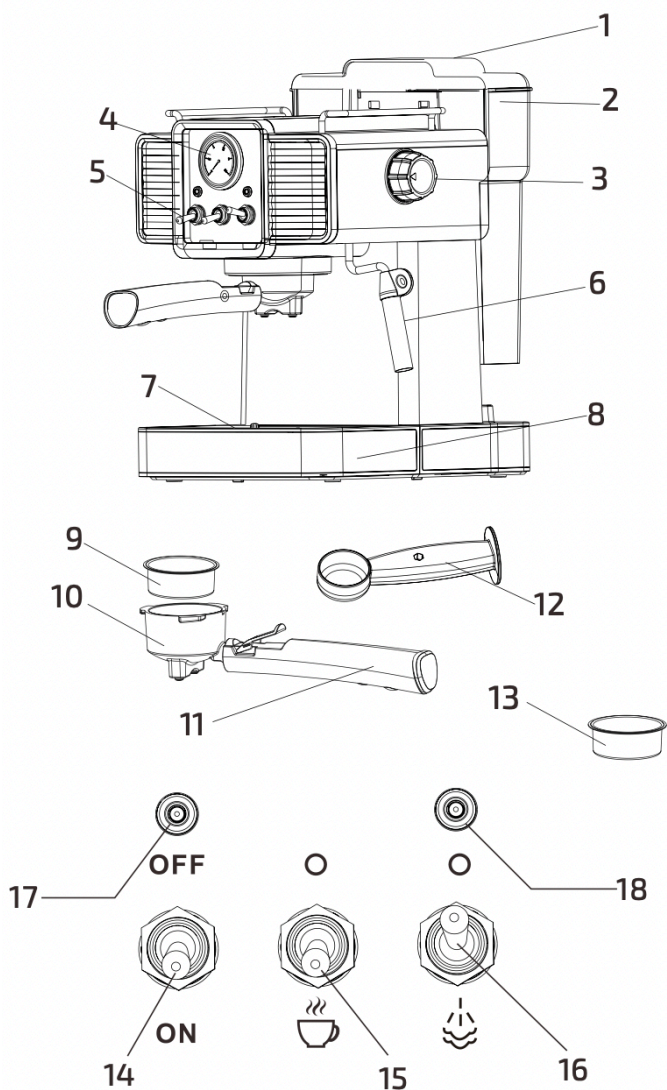


Fig./Img./Abb./Afb./ Rys/ Obr.. 1

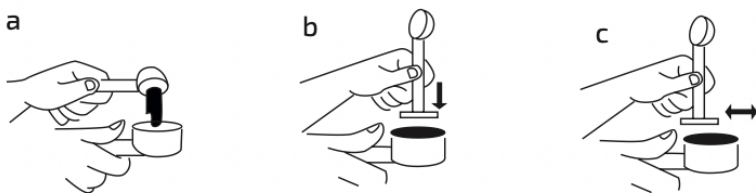


Fig./Img./Abb./Afb./ Rys/ Obr.. 2

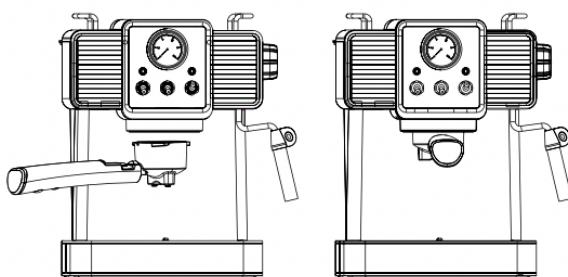


Fig./Img./Abb./Afb./ Rys/ Obr.. 3

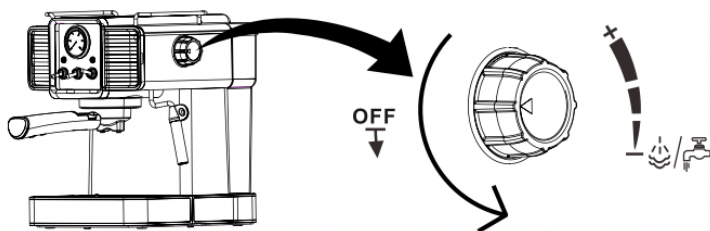


Fig./Img./Abb./Afb./ Rys/ Obr.. 4

www.cecotec.es

Cecotec Innovaciones S.L.
Av. Reyes Católicos, 60, 46910
Alfajar (Valencia) Spain
AP01230721